



# Allinea DDT – A revolution in debugging



The Distributed Debugging Tool is a comprehensive graphical debugger for scalar, multi-threaded and large-scale parallel and multi-core applications.

DDT puts you in control of your application, whether you are working with a workstation or a thousand processor high performance cluster

DDT has the industry's best parallel debugger interface; one screen to control thousands of processes – all at the click of a button

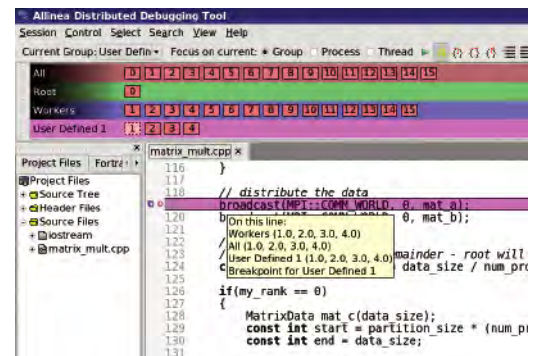
Supports all major MPIs, Open MP and queueing systems

Sophisticated memory debugger finds memory leaks and common errors

Easy-to-use, powerful and cost-effective

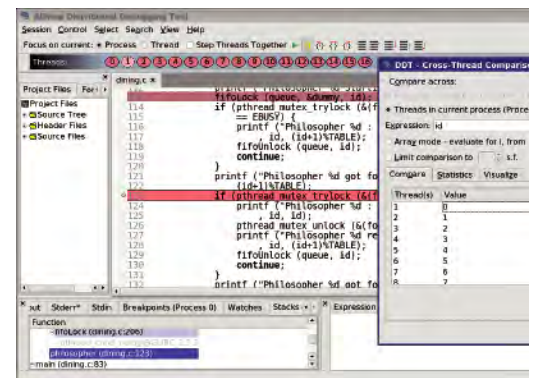
Advanced C, C++ and Fortran support

DDT saves time, frustration and money



Intuitive Interface

*DDT has been designed to make debugging even the most demanding parallel applications easier, faster and more efficient*



Multiple thread support

*DDT allows users to debug applications by both processes and threads*

## Scalable Versatile Intuitive

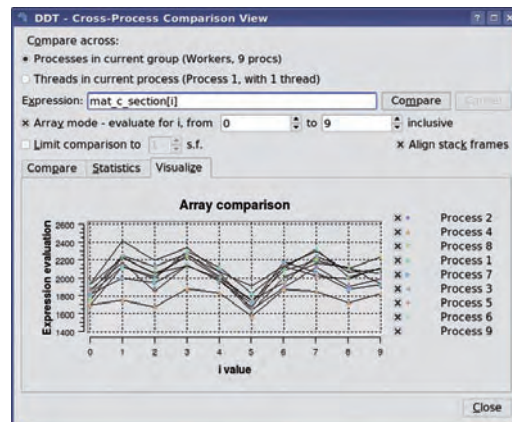
- Run and step groups of processes and threads with visual feedback, including an enhanced parallel stack view for a current overview of process locations
- Compare values across groups of processes and threads: statistically, graphically and automatically by equivalence
- Message queue analysis to detect program deadlock
- Attach to running processes, launch MPI jobs through GUI, or let DDT submit your job to your favourite batch scheduler
- Advanced Fortran and C++ support, including a Fortran module browser and a C++ standard template wizard
- Exceptional memory debugging features and instant detection of out-of-bounds writes and reads for allocated data
- Navigate through local variables, stack frame and complex data structures with ease
- Visualize slices of multi-dimensional arrays using OpenGL graphics
- Automatic display of project source files with syntax highlighting
- OpenMP and multi-threaded support
- Multi Dimensional Array Viewer
- Simplified presentation of process groups
- Remote launch facility

### COMPATIBILITY

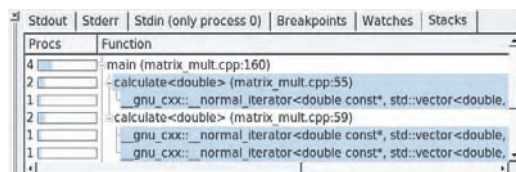
- Available for AIX, Linux and Solaris
- Support for the latest processors and platforms: X86, X86-64, NEC SX, IA64, Power, UltraSPARC, IBM Cell BE, CRAY XT and Blue Gene/P
- Compatible with compilers from all major vendors including: Absoft, IBM, Intel, Pathscale, Portland Group, Sun and the GNU compiler suite

### NEW in DDT 2.4.1:

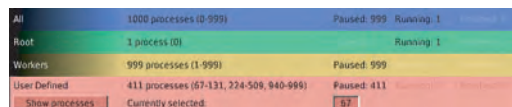
- Checkpointing support (gdb, OpenMPI/BLCR)
- Multiple executable debugging support (client/server)
- CRAY MPT3 + SHMEM support



Rapid problem-finding  
DDT automatically analyses values  
across processors



Enhanced parallel stack view  
DDT now shows exactly where your  
program is, in one single view



Summary Process View  
DDT has the ability to control thousands  
of processes from a single clear panel

